



# TABLES AND SINKS

SERVING THE FOOD INDUSTRY SINCE 1951

## ICE BINS AND ACCESSORIES

*Ideal for restaurants and bars, Omcan's ice bins are designed to have your ice ready right when you need it! Featuring bottle holders on the side to keep your drink mixers chilled and easily accesible, these ice bins are easy to clean and perfect for ice storage.*



**43477 & 43478 comes with 7 Circuit Post-Mix Cold Plate**

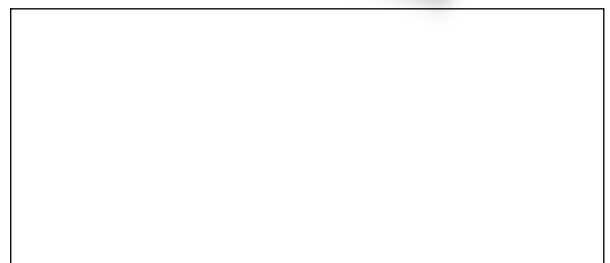


**WARRANTY**



SHIPPED ON PALLET

All ice bins except item 43475



Authorized Dealer

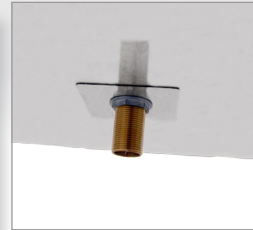
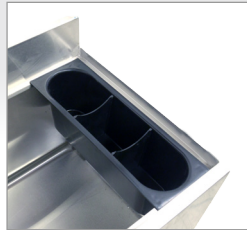
# TABLES AND SINKS

## 24-INCH STAINLESS STEEL ICE BIN



*Comes with leg brace*

### DETAILED IMAGES



### FEATURES

- 20-gauge 304 stainless steel bowl, top, back and body
- Galvanized leg and socket, plastic bullet feet and "U" shape leg bracing
- Plastic bottle holder included
- 3" high backsplash

### TECHNICAL SPECIFICATIONS

|                  |   |
|------------------|---|
| ITEM             | 43475   |
| CAPACITY         | 77 lbs. / 34.9 kg.                            |
| BOWL SIZE        | 22" x 14.8" x 12" / 558.8 x 375.92 x 304.8 mm |
| DIMENSIONS (DWH) | 24" x 18.5" x 33" / 609.6 x 469.9 x 838.2 mm  |
| WEIGHT           | 56.76 lbs. / 25.7 kg.                         |
| GROSS DIMENSIONS | 24" x 18" x 33" / 609.6 x 457.2 x 838.2 mm    |
| GROSS WEIGHT     | 63.8 lbs. / 29 kg.                            |

### OPTIONAL ACCESSORIES



Item **44622** - Sliding Cover  
Dimensions: 16.5" x 23.5"



Item **44625** - Stainless Steel Leg  
Brace for 18" x 24" Ice Bins



Item **44624** - 14" Stainless  
Steel Legs for Ice Bins

## OMCAN INC.

Telephone: 1-800-465-0234

Fax: (905) 607-0234

Email: [sales@omcan.com](mailto:sales@omcan.com)

Website: [www.omcan.com](http://www.omcan.com)



Follow us to keep up to date with the latest news and offers



2020.E.O.E

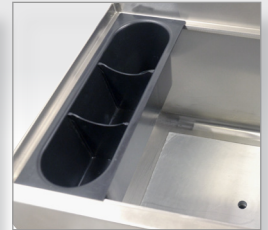
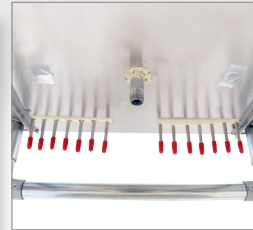
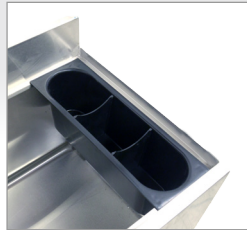
# TABLES AND SINKS

24-INCH STAINLESS STEEL INSULATED ICE BIN



*Comes with leg brace*

## DETAILED IMAGES



## FEATURES

- with 7 Circuit Post-Mix Cold Plate
- 20-gauge 304 stainless steel bowl, top, back and body
- Galvanized leg and socket, plastic bullet feet and "U" shape leg bracing
- Comes with aluminum cold plate with stainless steel tubing circuits
- Plastic bottle holder included
- 3" high backsplash

## TECHNICAL SPECIFICATIONS

| ITEM             | 43477   |
|------------------|---|
| CAPACITY         | 77 lbs. / 34.9 kg.                            |
| BOWL SIZE        | 22" x 14.8" x 12" / 558.8 x 375.92 x 304.8 mm |
| DIMENSIONS (DWH) | 24" x 18.5" x 33" / 609.6 x 469.9 x 838.2 mm  |
| WEIGHT           | 91.3 lbs. / 41.4 kg.                          |
| GROSS DIMENSIONS | 24" x 18.5" x 33" / 609.6 x 469.9 x 838.2 mm  |
| GROSS WEIGHT     | 108.9 lbs. / 49.4 kg.                         |

## OPTIONAL ACCESSORIES



Item **44622** - Sliding Cover  
Dimensions: 16.5" x 23.5"



Item **44625** - Stainless Steel Leg  
Brace for 18" x 24" Ice Bins



Item **44624** - 14" Stainless  
Steel Legs for Ice Bins

## OMCAN INC.

Telephone: 1-800-465-0234  
Fax: (905) 607-0234  
Email: sales@omcan.com  
Website: www.omcan.com



Follow us to keep up to date with the latest news and offers



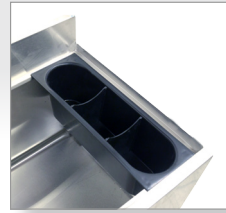
# TABLES AND SINKS

## 36-INCH STAINLESS STEEL ICE BIN



*Comes with leg brace*

### DETAILED IMAGES



### FEATURES

- 20-gauge 304 stainless steel bowl, top, back and body
- Galvanized leg and socket, plastic bullet feet and "U" shape leg bracing
- Plastic bottle holder included
- 3" high backsplash

### TECHNICAL SPECIFICATIONS

|                  |   |
|------------------|---|
| ITEM             | 43476   |
| CAPACITY         | 119 lbs. / 54 kg.                             |
| BOWL SIZE        | 34" x 14.8" x 12" / 863.6 x 375.92 x 304.8 mm |
| DIMENSIONS (DWH) | 36" x 18.5" x 33" / 914.4 x 469.9 x 838.2 mm  |
| WEIGHT           | 77.1 lbs. / 35 kg.                            |
| GROSS DIMENSIONS | 36" x 18" x 33" / 914.4 x 457.2 x 838.2 mm    |
| GROSS WEIGHT     | 79.2 lbs. / 36 kg.                            |

### OPTIONAL ACCESSORIES



Item **44623** - Sliding Cover  
Dimensions: 16.5" x 35.5"



Item **44626** - Stainless Steel Leg  
Brace for 18" x 36" Ice Bins



Item **44624** - 14" Stainless  
Steel Legs for Ice Bins

## OMCAN INC.

Telephone: 1-800-465-0234

Fax: (905) 607-0234

Email: [sales@omcan.com](mailto:sales@omcan.com)

Website: [www.omcan.com](http://www.omcan.com)



Follow us to keep up to date with the latest news and offers



2020.E.O.E

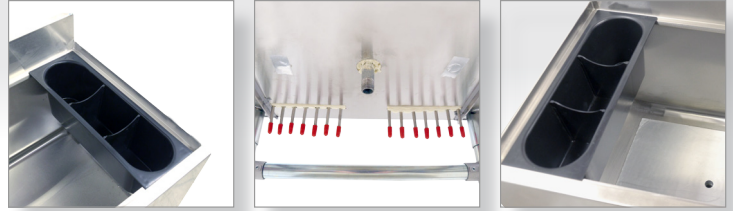
# TABLES AND SINKS

36-INCH STAINLESS STEEL INSULATED ICE BIN



*Comes with leg brace*

## DETAILED IMAGES



## FEATURES

- with 7 Circuit Post-Mix Cold Plate
- 20-gauge 304 stainless steel bowl, top, back and body
- Galvanized leg and socket, plastic bullet feet and "U" shape leg bracing
- Comes with aluminum cold plate with stainless steel tubing circuits
- Plastic bottle holder included
- 3" high backsplash

## TECHNICAL SPECIFICATIONS

| ITEM             | 43478   |
|------------------|---|
| CAPACITY         | 119 lbs. / 54 kg.                             |
| BOWL SIZE        | 34" x 14.8" x 12" / 863.6 x 375.92 x 304.8 mm |
| DIMENSIONS (DWH) | 36" x 18.5" x 33" / 914.4 x 469.9 x 838.2 mm  |
| WEIGHT           | 134.4 lbs. / 60.1 kg.                         |
| GROSS DIMENSIONS | 36" x 18.5" x 33" / 914.4 x 469.9 x 838.2 mm  |
| GROSS WEIGHT     | 156.2 lbs. / 70.85 kg.                        |

## OPTIONAL ACCESSORIES



Item **44623** - Sliding Cover  
Dimensions: 16.5" x 35.5"



Item **44626** - Stainless Steel Leg  
Brace for 18" x 36" Ice Bins



Item **44624** - 14" Stainless  
Steel Legs for Ice Bins

## OMCAN INC.

Telephone: 1-800-465-0234  
 Fax: (905) 607-0234  
 Email: sales@omcan.com  
 Website: www.omcan.com

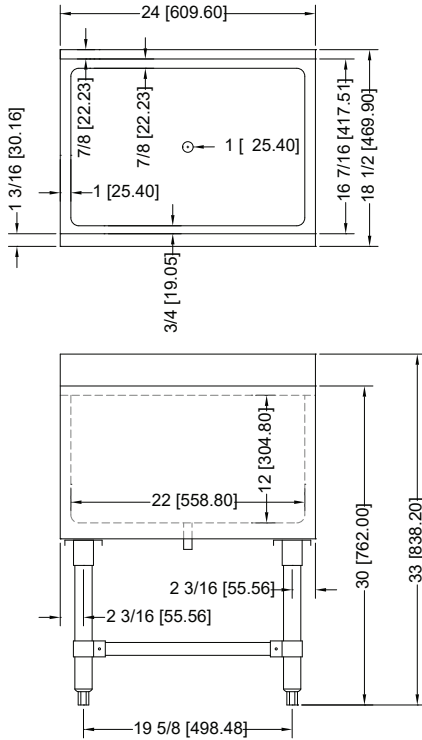


Follow us to keep up to date with the latest news and offers

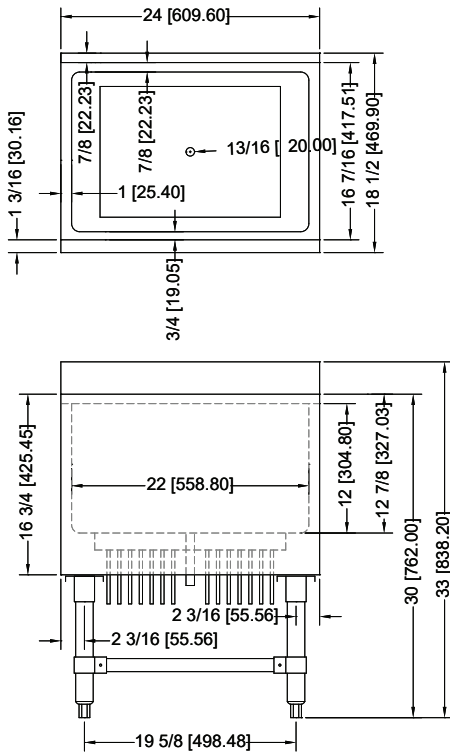
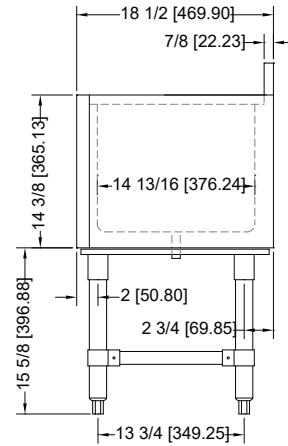


# TABLES AND SINKS

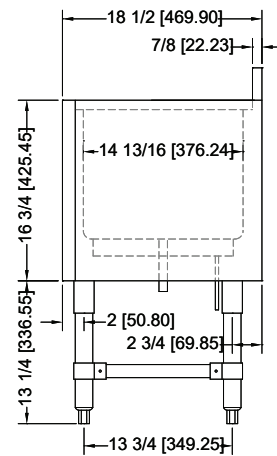
TECHNICAL DRAWINGS FOR ITEMS 43475 AND 43477



*Item 43475*



*Item 43477*



**OMCAN INC.**

Telephone: 1-800-465-0234

Fax: (905) 607-0234

Email: sales@omcan.com

Website: www.omcan.com

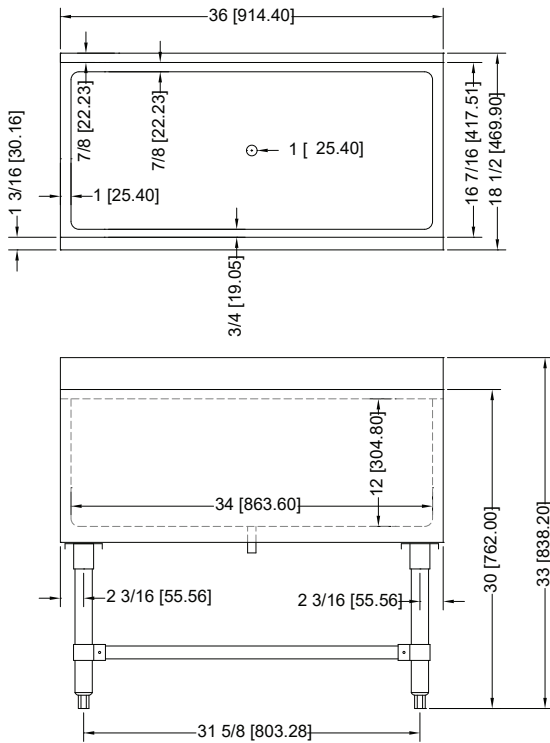


Follow us to keep up to date with the latest news and offers

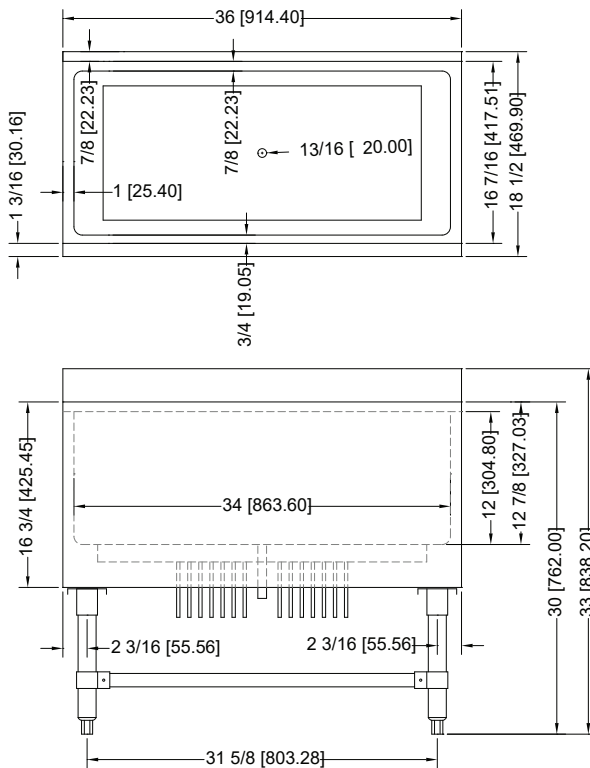
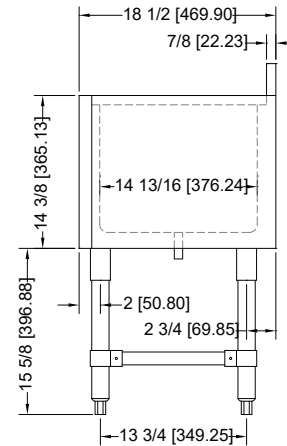


# TABLES AND SINKS

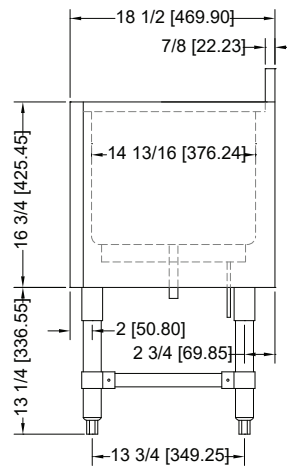
TECHNICAL DRAWINGS FOR ITEMS 43476 AND 43478



*Item 43476*



*Item 43478*



## OMCAN INC.

Telephone: 1-800-465-0234  
 Fax: (905) 607-0234  
 Email: sales@omcan.com  
 Website: www.omcan.com



Follow us to keep up to date with the latest news and offers

